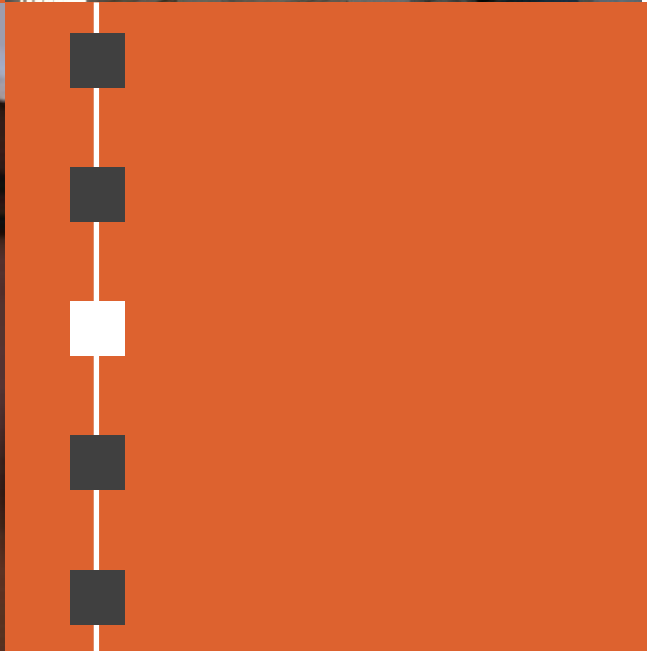
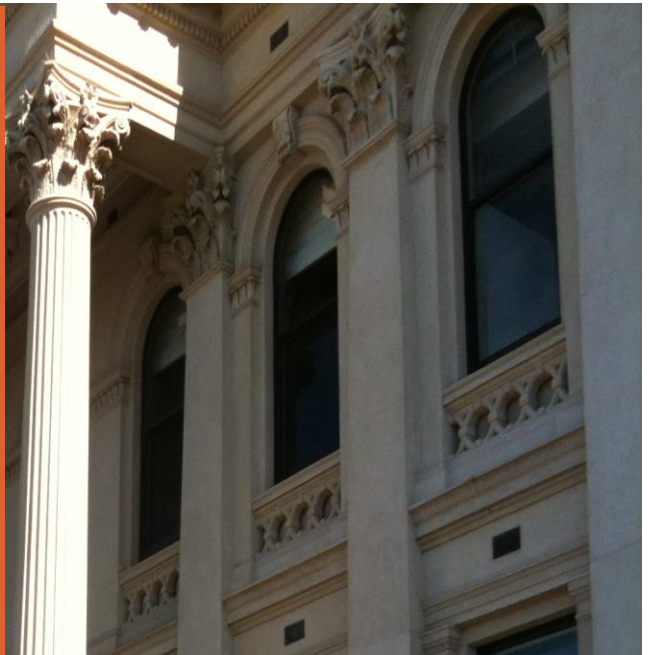


A PRESENTATION  
FROM  
AUSTRALIA'S INFRASTRUCTURE PROJECT MANAGEMENT SPECIALISTS



*YOUR  
PROJECT  
PARTNERS'*



#### OUR LOCATIONS

##### BRISBANE

Level 19  
10 Eagle Street  
Brisbane QLD 4000

Tel: 61 7 3303 8446  
Fax: 61 7 3303 8445

##### MELBOURNE

566 St Kilda Road  
Melbourne 3004

Tel: 61 3 9526 8526  
Fax: 61 3 9526 8419

##### SYDNEY

Level 9  
123 Epping Road  
North Ryde NSW 2113

Tel: 61 7 8875 7935  
Fax: 61 2 8875 7777



## WHO IS WENDEN?

Wenden Partners are specialist Project Engineers and Managers who deliver better project outcomes for your organization. Our experience in project engineering ensures your project is scoped, planned & delivered professionally utilizing our accredited project engineers & managers.

## PHILOSOPHY

At Wenden Partners, we strive to become '*your project partners*' with a desire to form a long term business relationship where we can assist you to deliver your capital projects. We utilize 'best practice' project engineering and management methods with integrity, ethics and professional expertise; we deliver the best outcome for your project and consequently your business.

## METHODOLOGY

At Wenden, we adapt a 'best practice' methodology for your project. This is delivered through a flexible approach to meet your individual project and business requirements. Our project teams ensure that your project is managed through a proven methodology which mitigates risk, ensures better outcomes and delivers your project safely. All of our projects are monitored and audited regularly to ensure every aspect of your project is professionally managed.

## HISTORY

The Wenden group of companies commenced a dedicated project management service in 1991. Over the last 20 years we have successfully delivered a range of challenging projects in over 20 industry sectors.

***YOUR  
PROJECT  
ENGINEERS'***



## **INFRASTRUCTURE PROJECTS**

### **OUR LOCATIONS**

#### **BRISBANE**

Level 19  
10 Eagle Street  
Brisbane QLD 4000

Tel: 61 7 3303 8446  
Fax: 61 7 3303 8445

#### **MELBOURNE**

566 St Kilda Road  
Melbourne 3004

Tel: 61 3 9526 8526  
Fax: 61 3 9526 8419

#### **SYDNEY**

Level 9  
123 Epping Road  
North Ryde NSW 2113

Tel: 61 7 8875 7935  
Fax: 61 2 8875 7777



**PROJECT MASTER PLAN & FEASIBILITY**

**PRINCIPLE PROJECT REPRESENTATION**

**CIVIC CENTRE PROJECTS**

**SPORTING & AQUATIC FACILITIES**

**TRANSPORT INTERCHANGES**

**HERITAGE PROJECTS**

**MARINE & WHARF PROJECTS**

**MAJOR RETAIL & CIVIC DEVELOPMENTS**

**AGED CARE FACILITIES**

**PARKS & RECREATION**

**EDUCATION & INSTITUTIONS**

**ASSET REMEDIATION**

**ASBESTOS REMEDIATION**

**MAJOR CIVIL WORKS**

**WATER & WASTE TREATMENT PLANTS**

**COGENERATION PLANTS**

**COMMUNITY & LEISURE FACILITIES**

**PROJECT AUDITS & CONSULTING**

# OUR PROJECT SERVICES

## project consulting

**Major capital projects require expert project planning, direction & governance.**

At Wenden, our senior project directors can act as your representative and direct your project through the different stages of its lifecycle. Commencing with the Master Plan, we can offer you governance and overall project management advice to ensure your project risks are mitigated and the project meets your community expectations.

Our senior project Directors provide invaluable advice and guidance for your projects

Services include: **project governance ~ project master planning ~ feasibility studies ~ project recovery ~ client representation ~ project reporting reports ~ guidance ~ complete project audits**

## turn-key project management

At Wenden we can deliver your project on a 'turn-key' basis for in-house projects or act as the Principle Project Manager on your behalf.

After we define the project brief with you, we fully scope the project and your requirements and then deliver the project on your behalf via a number of flexible and cost effective models.

Our experienced project teams take the risk out of your project, ensuring all of the project's nominated KPI's including safety, schedule, budget and performance criteria are met.

**Professional Project Management will save you \$\$\$ and your project**

# WHAT WE DO BEST

## project resourcing

We can provide you with experienced project personnel to assist you in delivering your project. This not only provides you with a project engineer or manager but also the resources, support and professional project systems of Wenden Partners.

When you have our project personnel working in your project team, you also have access to all the Wenden Project Management Systems, Audits and Management Team to ensure your project is delivered using best practice methodologies. Our people come with the support and guidance of our senior project directors, who monitor and audit the project throughout its lifecycle to ensure your project exceeds set KPI's.

### **Our Project resources include:**

- **Senior Project Managers**
- **Project Engineers**
- **Project Administrators**
- **Project Managers**
- **Supervisors**
- **Superintendents**

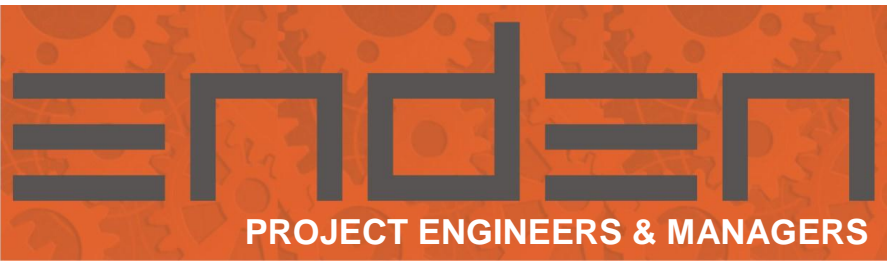
## project management systems and training

Organizations like yours spend \$\$\$ every year on capital works, yet we find many organizations and departments lack professional project management systems to ensure their projects meet the required governance and management standards expected in today's market.

To assist you, Wenden can tailor a Project Management System (PMO) into your organization and train your personnel on professional project methodologies. With so much riding on your project outcomes, why risk it with unprofessional project methods?

Our proven Project Management Systems will ensure your capital expenditure delivers your projects professionally.

*YOUR  
PROJECT  
MANAGEMENT  
PROFESSIONALS'*



### **Federation Square - Melbourne**

Project Manager for Alfasi Constructions/Multiplex for the fabrication and erection of the structural steel superstructure of the Federation Square Museum of Australian Art, inclusive of all architectural steel finishes. As the Project Manager, we undertook the programming, procurement, cost control and Q/A system implementation through to construction management and delivery of the project.



### **The New Museum of Victoria - Melbourne**

Project Manager for Alfasi Constructions for supply, fabrication and erection of approx. 2,500 ton of structural steel superstructure. This project was for the construction of architectural finished structural steel on the new Museum of Victoria, including the 'Gallery of Life' structure, which is the centerpiece of the new facility. Wenden were engaged to ensure the project met its objective and recovered from programming delays and costs overruns. Extensive consultation was required to ensure the site workforce could meet expectations and overcome IR issues and ensure a high QA compliance.



### **Redevelopment RAAF Base - Melbourne**

Project Manager for redevelopment of former RAAF base, Footscray, Victoria. Project involved property subdivision into the industrial park, then management of the D&C of multiple commercial buildings and principle project responsibilities for supervision of contractors in the D&C of the City West Shopping Centre and various retail outlets.



### **Station Pier – Reconstruction Melbourne**

Wenden undertook the Station Pier Project – Melbourne on behalf of the Department of Infrastructure (DOI) as the principal project manager representative. The project was a \$16 million reconstruction of the pier to provide an extended 50 year life span on the heritage listed site. Wenden acted as the project principle and superintendent with duties including design management, contract management, cost control and overall administration and risk management on behalf of the State Government.



### **City of Wagga Wagga**

Project Manager for the Stage II Water Treatment upgrade. This project included initial feasibility studies, consultation process, design management, construction and site management over two treatment plants which allow the city to meet the population growth and EPA discharge standards.



*'OUR PEOPLE  
ARE YOUR  
PEOPLE'*



## OUR LOCATIONS

### BRISBANE

Level 19  
10 Eagle Street  
Brisbane QLD 4000

Tel: 61 7 3303 8446  
Fax: 61 7 3303 8445

### MELBOURNE

566 St Kilda Road  
Melbourne 3004

Tel: 61 3 9526 8526  
Fax: 61 3 9526 8419

### SYDNEY

Level 9  
123 Epping Road  
North Ryde NSW 2113

Tel: 61 7 8875 7935  
Fax: 61 2 8875 7777



## PROJECTS AND CLIENTS



### Incitec Pivot

Project Manager for the 'Asbestos Management Project' at IPL's Gibson Island Nitrogen Plant, Queensland. This 'World First' project called for the removal of all friable asbestos whilst the plant remained fully operational. This demanding project had specific operational and safety management standards and called for a new approach to be derived for all aspects of the project delivery including operations, safety, environmental management, scheduling and emergency responses and was completed exceeding all project KPI's of time, budget and safety.



### Bio-Diesel Producers Limited

Project Manager for the design and development of the Bio-Diesel Producers Limited (BPL) Greenfield Bio-diesel site in Victoria. This \$28mil project required extensive design management with engineers and OEM equipment in Austria. The project brief called for the management of the entire project from site development through to construction management and overall financial control.



### ICI Limited

Project Manager for the design and construction of the new hydrochloric acid plant in Yarraville, Melbourne. This new plant was located with the existing plant and required the supervision and consultation in the design and the project management through to the construction and installation of all plant and equipment. Project programming, OH&S requirements and construction supervision were important aspects of this project. It was completed successfully with the commissioning and handover of the plant to ICI ahead of schedule.



### Koppers Limited

Project Manager for the design and construction of the several cereal and grain mills in Australia and China. This was an extensive project roll out commencing with the D&C of the Arnotts feed mills in Queensland. This multi-faceted project included the design and construction of both plant and administration buildings and installation of new process lines, material handling facilities bulk storage silo's and material handling equipment through to plant commissioning all over a 24 month period. Extensive systems were implemented to comply with the client's requirements and allow fast tracking of both the construction of the site infrastructure along with the design and fabrication of all the plant and material handling equipment.



Quality  
Endorsed  
Company  
ISO9001:2000  
QEC24278

*'YOUR  
PROJECT  
MANAGEMENT  
PROFESSIONALS'*



#### OUR LOCATIONS

##### BRISBANE

Level 19  
10 Eagle Street  
Brisbane QLD 4000

Tel: 61 7 3303 8446  
Fax: 61 7 3303 8445

##### MELBOURNE

Level 2  
710 Collins Street  
Docklands VIC 3008

Tel: 61 3 9097 1759  
Fax: 61 3 9097 1888

##### SYDNEY

Level 9  
123 Epping Road  
North Ryde NSW 2113

Tel: 61 7 8875 7935  
Fax: 61 2 8875 7777

## PROJECTS AND CLIENTS



### Rheem Limited

A major project undertaken for Rheem Ltd was for the design and construction of their new Clayton plastic plant and administration building in Melbourne. This was a 10,000 square metre expansion of the existing site and included the construction of a new administration building and the installation of all plant services. Our involvement in this project was from day one, as principal project manager. Engaged to run the project from the concept design, tender and evaluation, specification and contractor supervision through to client and government liaison, plant installation, services and commissioning.



### VLine- Fast Train Refueling Facilities

Project Manager for the Design & Construction of five Terminal Refueling Facilities for the 'Fast Train' project. Located throughout country Victoria, these service facilities allowed for refueling and servicing of the cars on a turn-around basis without delay.



### Murray Goulburn Limited

Project Manager for the design, installation and commissioning of new milk pasteurization plant in Victoria, inclusive of civil and structural construction works, construction management and plant installation of the 30,000 litre facility for both dried and fresh product.



### Kraft Foods Limited

A number of projects have been undertaken for Kraft Foods in the Melbourne Leitchville and Strathmerton plants over the last ten years. Including the relocation of the dairy process lines to Strathmerton plant; Dry powder storage and vacuum handling system; Refurbishment project of major process plant and equipment; Consulting on various process improvement projects; the installation and commissioning of various packaging lines.

The design and installation of a cooling and refrigeration plant, and the supervision and the installation of a new distribution centre.





*'YOUR PROJECT  
ENGINEERS'*



## OUR LOCATIONS

### BRISBANE

Level 19  
10 Eagle Street  
Brisbane QLD 4000

Tel: 61 7 3303 8446  
Fax: 61 7 3303 8445

### MELBOURNE

566 St Kilda Road  
Melbourne 3004

Tel: 61 3 9526 8526  
Fax: 61 3 9526 8419

### SYDNEY

Level 9  
123 Epping Road  
North Ryde NSW 2113

Tel: 61 7 8875 7935  
Fax: 61 2 8875 7777

## PROJECTS AND CLIENTS



### Tasmanian Alkaloids Limited

Project Manager and consultant for the Tasmanian Alkaloids Project, involving the D&C of the expended production and filter system within the existing plant. Project included the preparation of project documentation for all contract packages along with the implementation of new Project and OH&S Safety procedures for the company to meet ISO 9000 requirements. The position required the overall Project Management of the design and construction of the high security facility.



### Tube Makers Limited

Project Manager for the expansion of Tubemakers Victorian operation with the D&C of the brown field site and the installation of the expanded operational plant for heavy wall sections and distribution centre. Total project management delivery procedures were employed to ensure end user satisfaction was exceeded and operational objectives were reached.



### ASTA – Aero Space Technologies of Australia

Project Leader for the production, assembly and procedural implementation for the 'Black Hawk' helicopter. This position included the establishment of extensive Q.A and project procedures along with plant modification and services. Other work was carried out on general site modifications and layout changes and various other test and capital works programs.



### Pioneer Cement Limited

Project Manager for the modification and construction of a number of Pioneer quarry and concrete site upgrades. This was a progressive capital works programme within the company to ensure customer delivery of products within a set demand timeframe and QA tolerance. This project included refurbishment of plant and equipment and the compliance with EPA requirements. Our role was inclusive of all project management tasks including programming, capital expenditure, supervision and commissioning.



*'YOUR  
PROJECT  
PARTNERS'*



## PROJECTS AND CLIENTS

### OUR LOCATIONS

#### BRISBANE

Level 19  
10 Eagle Street  
Brisbane QLD 4000

Tel: 61 7 3303 8446  
Fax: 61 7 3303 8445

#### MELBOURNE

566 St Kilda Road  
Melbourne  
Tel: 61 3 9526 8526  
Fax: 61 3 9526 8419

#### SYDNEY

Level 9  
123 Epping Road  
North Ryde NSW 2113

Tel: 61 7 8875 7935  
Fax: 61 2 8875 7777



#### SPC – Shepparton Preserving Company

Project Managers for the construction of the new plant facility. This included a plant extension, re-layout, installation/modification, the commissioning of process lines and construction of a new laboratory facility.



#### Southcorp Wines Limited

Project Manager for the delivery of new process design and fabrication of the new wine fermentation and bottling plant in South Australia. This project entailed the supervision of the design team and liaison with the industry consultants through to preparation of the tenders and specifications, contract drafting and award and QA supervision of all fabrication and delivery to site through to installation and commissioning, site and construction management.



#### City of Port Phillip – Community Facilities

Various projects were undertaken to enhance the community assets of Port Phillip including improvements for Council owned restaurants and cafes, refurbishments of parks & recreational toilet blocks and the remediation of car parks.



#### Regional Rail Link Authority

Project consultant for the RRLA to determine impact on the future rail corridor on local industry. Brief included the requirement to assess the operational requirements and design alternative options to allow industry to maintain operations throughout the rail project.



#### Manningham Civic Centre - Master Plan

Project Manager for the development of the Master Plan for The Pines Civic Centre. This project involved consultant and design management and project value engineering



*YOUR  
PROJECT  
ENGINEERS'*



## PROJECTS AND CLIENTS

### OUR LOCATIONS

#### BRISBANE

Level 19  
10 Eagle Street  
Brisbane QLD 4000

Tel: 61 7 3303 8446  
Fax: 61 7 3303 8445

#### MELBOURNE

566 St Kilda Road  
Melbourne 3004

Tel: 61 3 9526 8526  
Fax: 61 3 9526 8419

#### SYDNEY

Level 9  
123 Epping Road  
North Ryde NSW 2113

Tel: 61 7 8875 7935  
Fax: 61 2 8875 7777



#### Knox Shopping Centre – AMP Limited

Project Engineers for the construction of the expanded Knox City Shopping Centre, Melbourne. This was a complex project involving construction to its current status and included site supervision of trades and consultants through to completion. As within a site and construction environment, the project required extensive Industrial relations consultation, trade coordination, cost and commercial controls and extensive 'fast track' design management strategies.



Carter Holt Harvey

#### Carter Holt Harvey – Morwell Timber Mill Project Development – D&C

Project Manager for the \$38m design and construction of the Carter Holt Harvey Timber Mill redevelopment at Morwell Victoria facility. The project was multi-faceted, including a heavy rail extension from the Morwell main line and the design of the timber mill whilst maintaining production.



#### South Melbourne Town Hall

Project Manager for the structural remediation of the historic South Melbourne Town Hall. This 1880's landmark required structural remediation throughout its roof structure whilst maintaining the daily operations of the Council Offices and Australian Academy Of Music



#### Federation Square – Atrium

Project Consultant for the construction of the Federation Square Atrium. This complex structure required extensive programming and construction analysis to meet its design intent.



■ **LETS TALK!**

**HOW CAN WE HELP YOU?**



**BRISBANE**  
Level 19  
10 Eagle Street  
Brisbane QLD 4000  
Tel: 61 7 3303 8446  
Fax: 61 7 3303 8445

**MELBOURNE**  
566 St Kilda Road  
Melbourne VIC 3004  
Tel: 61 3 9526 8526  
Fax: 61 3 9526 8410

**SYDNEY**  
Level 9  
123 Epping Road  
North Ryde NSW 2113  
Tel: 61 7 8875 7935  
Fax: 61 2 8875 7777

**[www.wenden.com.au](http://www.wenden.com.au)**